

2017 LEGISLATIVE SESSION PRESENTATION

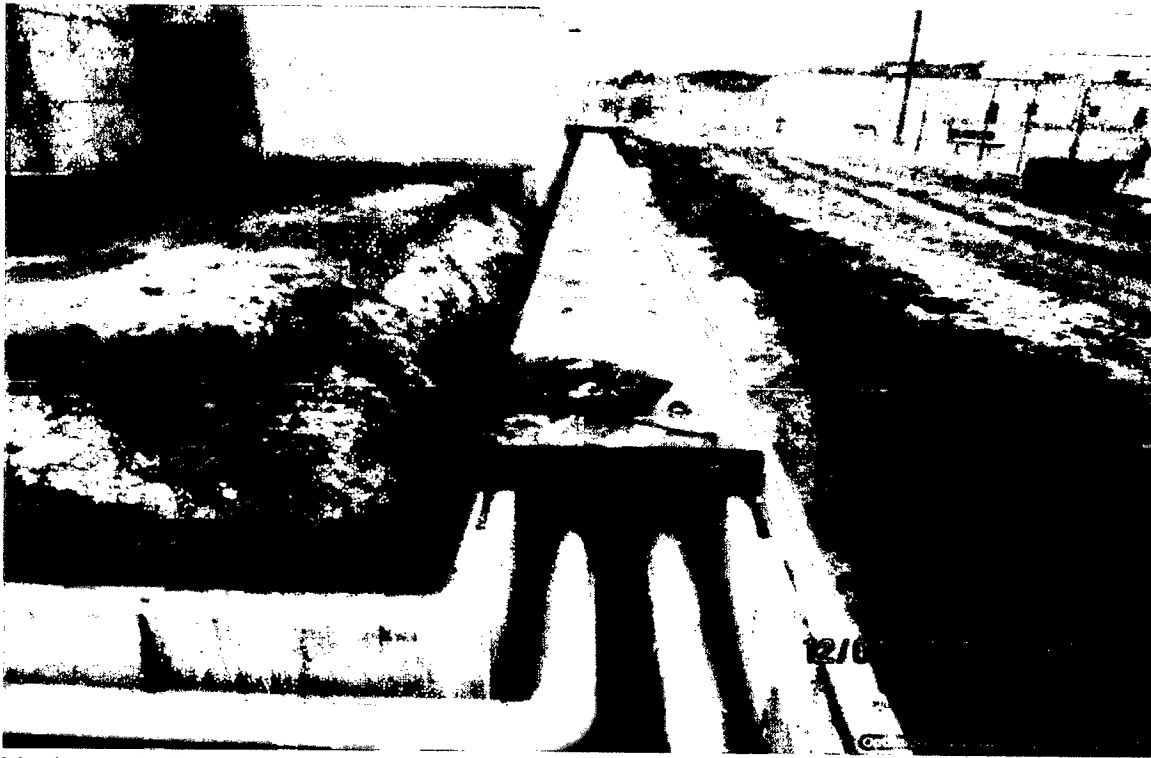
SOUTHERN STATE CORRECTIONAL FACILITY – STEAMLINER REPLACEMENT

Phase I

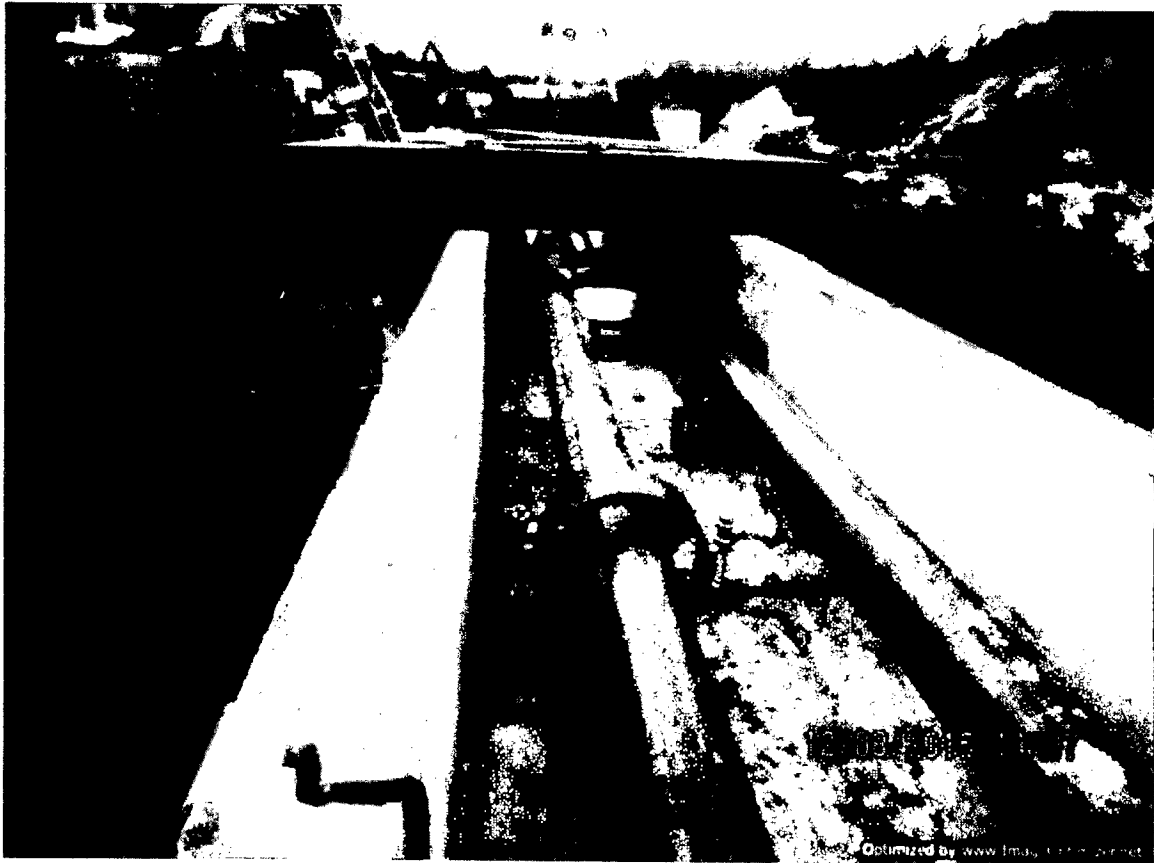
- The steamline replacement project was bid in the spring of 2015.
- The low bid of \$1,998,000 was submitted by Willey Earthmoving Corporation of Windsor, Vermont.
- Construction started in early July 2015.
- Shortly after construction started, the contractor encountered unforeseen conflicts with buried electrical systems.
- BGS redesigned the layout of the steamline locations to avoid utilities and construction resumed.
- Excavation and steamline replacement started at the furthest point (Building A, GHI Housing) and was constructed in a counterclockwise direction back toward the Heat Plant.
- Due to the unanticipated delays with buried electrical systems and the need to relocate the steamline the project was shut down due to winter conditions in late 2015.
- Work was resumed in March 2016.
- Substantial Completion was in August 2016.
- The final contract amount was \$ 2,133,271

Phase II

- BGS engineering will finalize Phase II design in early 2017.
- The final phase will connect the Core Facilities Building and the trench and piping layout to interconnect back at the boiler plant.
- We anticipate bidding the project in the spring and final project completion in late 2017.
- The estimate for the final phase is \$750,000.
- Funds remaining for the final phase include residual funds from FY-15 Steamline (\$150,000) and FY-15 Copper Waterline (\$300,000).



Vault tops being installed along west side of Building A.



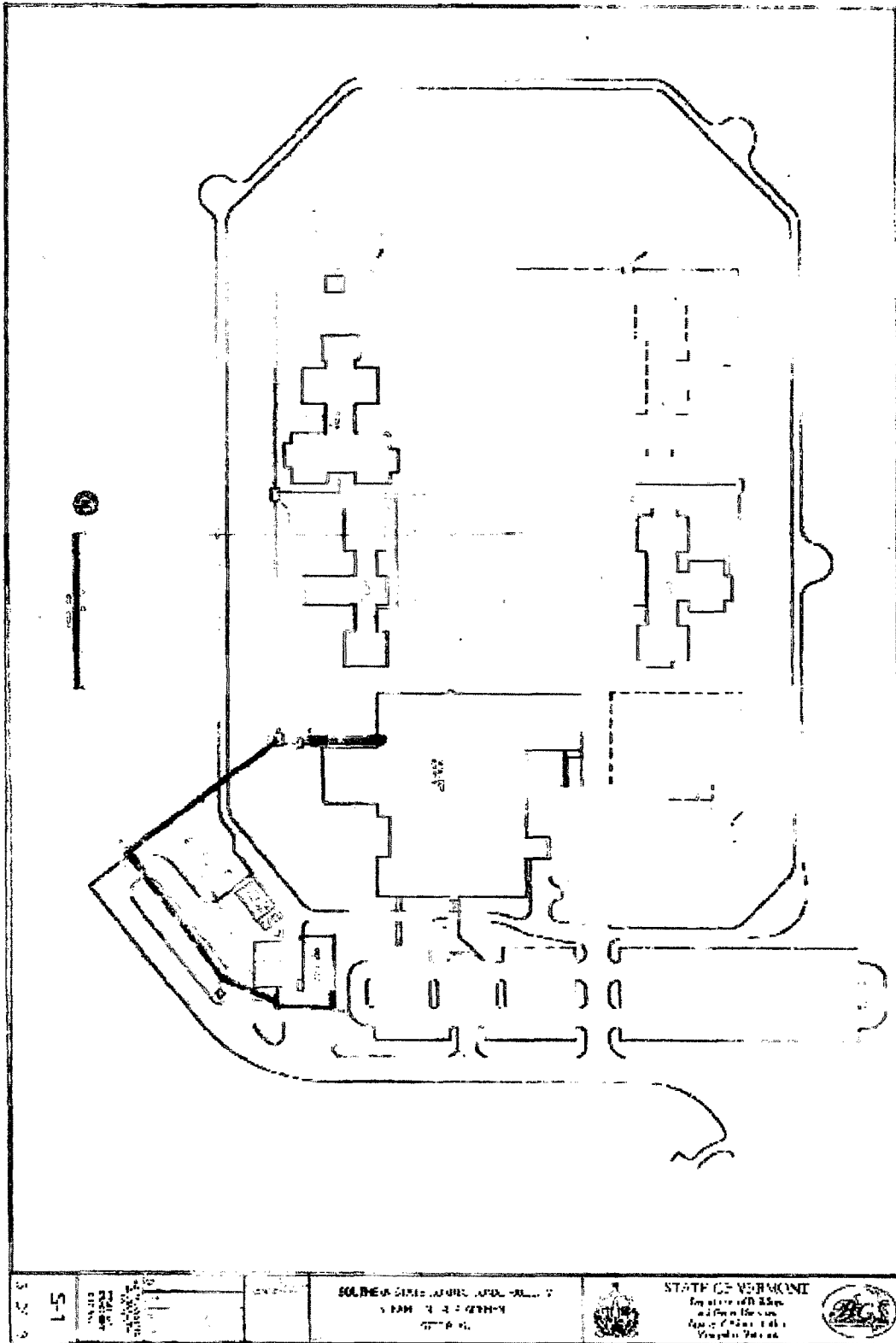
Fixed Pipe Support east of MH 13.



Coring MH 14 for conduit.



Trenches west of MH 13 on Soft Sub Base (taken approximately 200 ft west of MH 13)



SSCF – STEAMLINER REPLACEMENT PHASING

Phase 1 – Yellow (Complete);

Phase 2 – Blue (2017)